



Artist & Composer Study

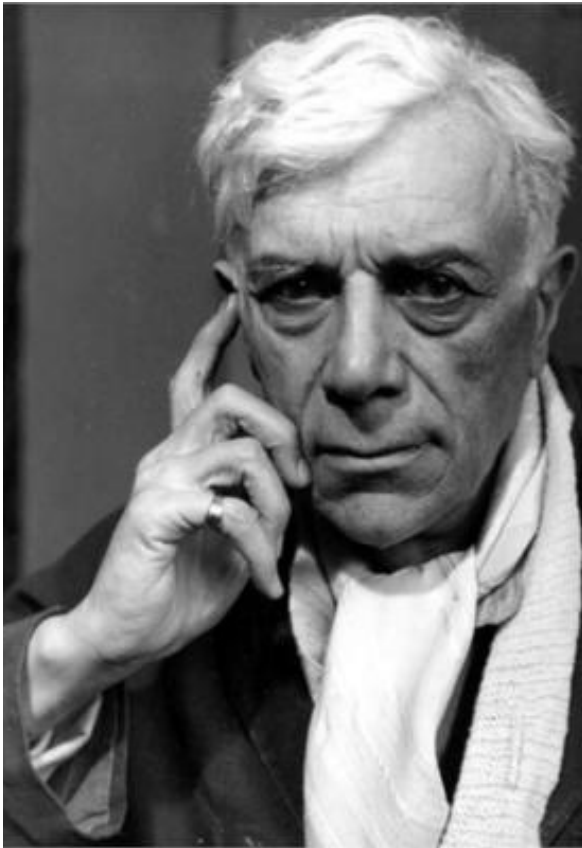
This session's featured artist is George Braques. We've included six art selections for your kids and teens to use for picture study. They are:

- *Houses at l'Estaque*
- *Violin and Candlestick*
- *The Olive Tree Near l'Estaque*
- *Fruit Dish, Ace of Clubs*
- *Man With a Guitar*
- *Fruit Dish*

Our featured composer is Irving Berlin. We've included six pieces (with links to each) to listen to. They are:

- Alexander's Ragtime Band
- The International Rag
- When I Lost You
- Ragtime Soldier Man
- Smile and Show Your Dimple
- That Mysterious Rag

Artist & Composer Study



Georges Braque

May 13, 1882 - August 31, 1963

Georges Braque was a French painter who helped develop the Cubist style of painting. He was born in Argenteuil-sur-Seine, France, on May 13, 1882. His father was a house painter and decorator, and it rubbed off on the young Georges.

He showed an interest in art from an early age and began studying at the École supérieure d'art et design Le Havre-Rouen when he was just 16 years old. However, he soon grew disillusioned with the traditional approach to painting that he was being taught there, and he left the school after only two years.

Braque started off painting in the Impressionism and Fauvism styles, however, he soon began

experimenting with different styles. He met and quickly became friends with Pablo Picasso, another young artist who was exploring new methods of art.

Together, Braque and Picasso developed the Cubist style of painting, which sought to break down objects into their component parts and then reassemble them in a new way. The Cubist style was initially met with skepticism by the art world, but Braque and Picasso continued to develop and refine it.

Braque served in the French army during World War I, where he was severely wounded and left temporarily blind. However, he recovered and soon after the war returned to painting. His work began to reflect the somber mood of post-war Europe, and in the 1920s, he started experimenting with different materials, such as sand and newspapers, which he incorporated into his paintings.

While most of Braque's art leaned into the Cubism style, he also dabbled in sculptures, lithographs, and book illustrations.

He died in Paris on August 31, 1963, yet his work had a profound impact on the development of modern art, and he is considered one of the most important modern artists of the 20th century.

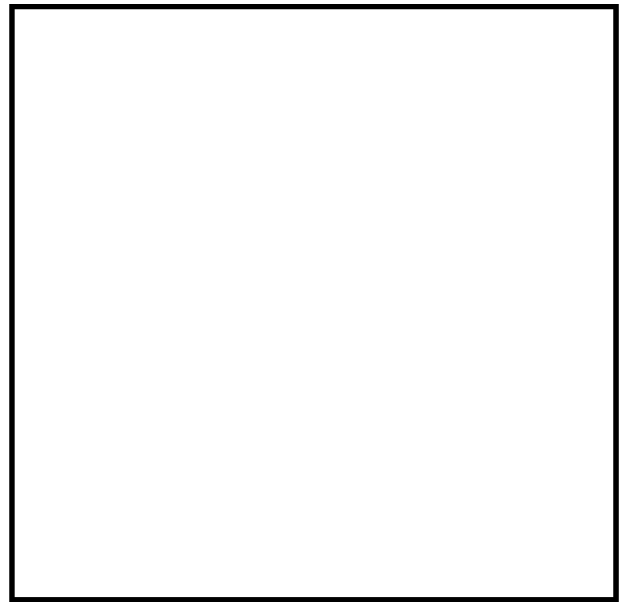
Artist Study

Name: _____

Date of Birth: _____

Place of Birth: _____

Artist Fun Facts: _____



Art Mediums Used: _____

Famous Artworks: _____

Further Study:



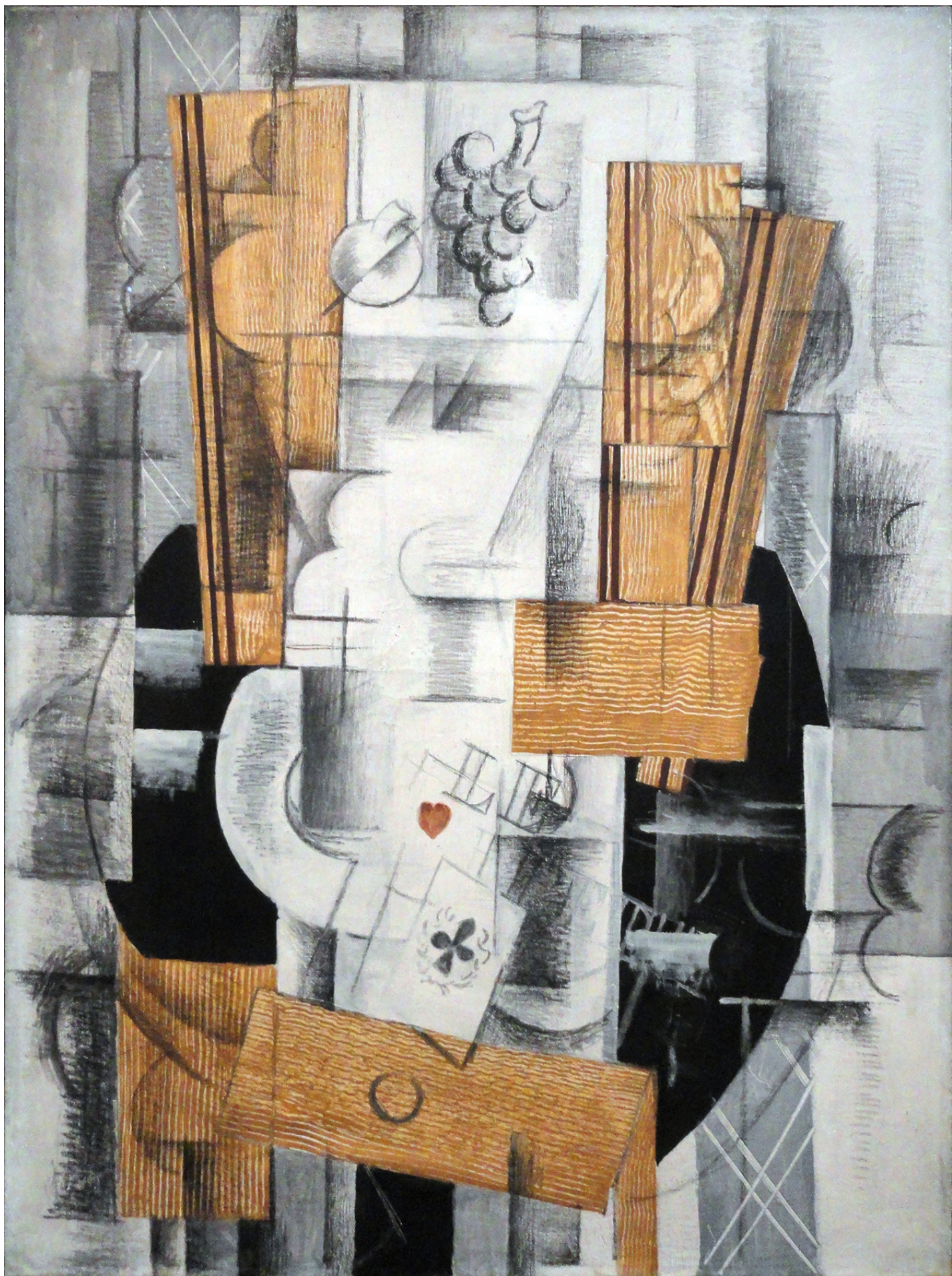
Houses at l'Estaque, 1908



Violin and Candlestick, 1910



The Olive Tree Near l'Estaque, 1909



Fruit Dish, Ace of Clubs, 1913



Man With a Guitar, 1914



Fruit Dish, 1908-1909

Picture Study

Title: _____

Date Created: _____

Art Mediums Used: _____

Further Study: _____

Use the box to draw a picture inspired by this artwork.

